

Boyle Program Family Resource Guide



Need Resources?

In a Crisis?

Overwhelmed and don't know where to begin?

2-1-1 is your connection to health and human services in your community

In NH & VT Dial 2-1-1

Outside NH: (866) 444-4211

Outside VT: (802) 652-4636



Molly's Place at the CHaD Family Center

Offers a warm, welcoming, child-friendly place at D-H

Monday-Friday, 9 am-5 pm

Staff is available to support families, provide resources, education, and community connections. Molly's Place is a great area for children to play and families to unwind between appointments or during long hospital stays.

Listen

(603) 448-4553

Provides services and support to meet critical needs of Upper Valley individuals and families

- Budget Counseling
- Camp Scholarships
- Community Dinners Crisis Assistance with Clothing
- Finances, Food, Fuel, Housing & Utilities
- Food Pantry
- Holiday Gift Baskets
- Thrift Stores
- Youth Mentoring

The Family Place

(802) 649-3268

A Parent-Child Center serving families of Windsor County

- Child Advocacy
- Child Care
- Financial Assistance
- Home Visits Lending Library
- Playgroups
- Parent Education and Support

The Upper Valley Haven

(802) 295.6500

Provides resources to Upper Valley families in need

- Community Resource Assistance
- Crisis Assistance with Food and Housing
- Educational Programming
- Employment Services

Women's Health Resource Center

Conveniently located On-The-Mall in Lebanon

Offers many resources including an extensive lending library, Free lectures on women's health topics, innovative classes, work-shops, support groups, referral/advocacy services, breast-feeding and childbirth education, community outreach, individual consultations, diaper bank.

Programs for Children with Chronic Health Conditions

New Hampshire

Community Partners Behavioral Health and Developmental Services of Strafford County

Provides early support, resources, and services for families of children with developmental disabilities.

(603) 516-9300

New Hampshire Family Ties

Legal and medical resources to empower Cerebral Palsy Families.

(800) 273-2645

New Hampshire Family Voices

Empowers/informs families and professionals caring for children with special health needs and disabilities from birth to adulthood.

(800) 852-3345 (x4525)

Partners in Health New Hampshire with Child and Family Services

Provides support to young adults and families of children with chronic health conditions.

(800) 656-3333

Special Medical Services Bureau

Helps families obtain specialty health care services, information and support.

(603) 271-4488

Special Needs Support Center (SNSC)

Assists children and adults with special needs, and their families.

(603) 448-6311

Vermont

Fletcher Allen Health Care Inc. HIV/AIDS Comprehensive Care Clinic

(802) 229-5415

Vermont Center for the Deaf & Hard of Hearing

(802) 229-5415

Vermont Department of Health Children with Special Health Needs

Provides information, medical services, care coordination, limited specialty clinics including child development, respite funding and nutrition services to help families support their children.

(802) 863-7333

Vermont Family Network (VFN)

(Previously known as Parent-to-Parent of Vermont) Empowers and supports Vermont families of children with special needs.

(800) 800-4005

Dental Health

Children's Dentistry of the Lakes Region

(Ages infant-19)

Lake's Region Office, Gilford, NH
(603) 527-2500

North Country Office, Littleton, NH
(603) 444-1500

White Mountains Office,
Plymouth, NH
(603) 536-2500

Concord Pediatric Dentistry

(Ages 1-15)

(603) 224-3339

Dr. Gary Breen

(Ages 1-18)

Rutland County residents only.
(802) 775-6771

Just Kids Pediatric Dentistry

(Ages infant-18)

Primary Office: Norwich, VT
Satellite Office: Lebanon, NH
(802) 649-5210

New London Pediatric Dentistry

(Ages 1-15)

(603) 877-0069

NH Smiles Program

For those whose children are enrolled in the NH Medicaid Program, Client Services will assist in finding dental care for their children.

(603) 271-4344

Patel Dental Group of Upper Valley

(All ages)

(603) 678-4700

Upper Valley Pediatric Dentistry

(Ages up to 18)

(802) 350-2860

Free Medical & Dental Care

Good Neighbor Health Clinic

Provides free medical care to low income Upper Valley residents living within 30 miles of White River Junction, Vermont.

(802) 295-1868

Red Logan Dental Clinic

Provides free dental care to low income adult residents living within 30 miles of White River Junction, Vermont.

(802) 295-7573

Counseling and Mental Health (children & adults)

Child and Family Services

Focuses on family counseling and independent living skills.

* Accepts NH and VT Medicaid

(603) 298-8237

Dartmouth-Hitchcock Psychiatry Crisis and Consultation

Provides psychiatric emergency services plus alcohol and drug abuse programs.

* Accepts NH and VT Medicaid

(800) 556-6249

Headrest Teen Line

Trained crisis counselors are available 24/7 to help with whatever is on your mind.

Teen line: (800) 639-6095

Crisis Hotline: (603) 448-4400



Health Care & Rehabilitation Services of Southeastern Vermont (HCRS)

Serves Windham and Windsor Counties for both adults and adolescents.

* Accepts NH and VT Medicaid

Emergency: (800) 622-4235

Brattleboro, VT: (802) 254-6028

Hartford, VT: (802) 295-3031

Springfield, VT: (802) 886-4500

Planned Parenthood

(White River Junction, VT)

(802) 281-6056

West Central Behavioral Health

A nonprofit, community-based mental health organization serving the needs of individuals and families in Grafton and Sullivan County.

* Accepts NH and VT Medicaid

Counseling for children: (603) 298-1101

Main Office: (603) 448-0126



Health Insurance

New Hampshire

NH Medicaid (Children's Medicaid)

Health and dental coverage for eligible children to age 20.

(603) 271-4344

New Hampshire Healthy Families

Health care coverage for Medicaid enrollees

(866) 769-3085

Well Sense-Managed Care for Medicaid enrollees

(877) 957-1300

Vermont

Medicaid (Dr. Dynasaur)

Low-cost and free health coverage for children, teens under 19, and pregnant women.

(866) 482-4723

Green Mountain Care

Low-cost and no-cost health insurances for uninsured Vermonters.

(800) 250-8427

Vermont Health Connect (VHC)

Vermont's Health Insurance Marketplace. Enroll in public health care programs (Medicaid and Dr. Dynasaur), buy private insurance, and find out if you are eligible for subsidies to help with coverage.

(855) 899-9600

Domestic Violence, Sexual Abuse and Assault Hotlines

Child Advocacy Center (CAC) at Dartmouth

(Grafton and Sullivan Counties)

A child-friendly place where trained forensic interviewers talk to suspected victims of child abuse.

(603) 653-9012

Turning Points Network

(Sullivan County)

Available 24/7. Crisis Support, Advocacy and Prevention.

(603) 543-0155

Wise

(Grafton County)

Available 24/7. Crisis Support, Advocacy and Prevention.

(603) 448-5525

Substance Abuse Programs & Support

D-H Alcohol and Drug Treatment Options

This directory lists resources for both NH and VT in Residential Treatment; Intensive Outpatient Treatment; Outpatient Treatment; and Support Groups.

www.dhmc.org/goto/alcohol_substance_abuse_regional_directory

New Hampshire

Headrest Crisis Hotline

(Lebanon, NH)

(603) 448-4400

National Suicide Prevention Lifeline

(800) 273-8255

Teen Line

Outpatient Alcohol/Drug Treatment

(800) 639-6095

Orion House

(Newport, NH)

For male adolescents.

* Accepts NH Medicaid

(603) 863-4918

Vermont

Health Care and Rehabilitation Services of Southeastern Vermont (HCRS)

(Windham and Windsor Counties)

For adults and adolescents.

* Accepts Medicare & VT Medicaid

Crisis Line: (802) 886-4500

Brattleboro, VT: (802) 254-6028

Springfield, VT: (802) 886-4500

Southwestern Community Services

(Claremont)

(603) 542-3160

The Upper Valley Haven

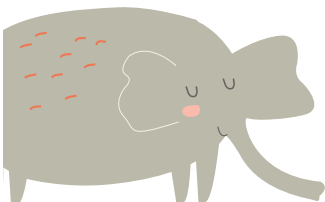
(WRJ, VT)

(802) 295-6500

Tri-County Cap

(Upper Valley)

(603) 443-6150



Support and Education for Parents

New Hampshire

New Hampshire Family Ties

Good Beginnings of the Upper Valley promotes healthy families and creates a caring community where every new parent feels connected and every baby enjoys a good beginning. Hands-on support is offered FREE to every family with a new baby in New Hampshire and Vermont regardless of income or circumstance.

(603) 298-9524

Pathways of the River Valley

Provides home-based therapeutic services for children, birth to age 3, who have a developmental delay or are at risk for a delay. Also, support for families and children ages 3-21 including information, referral, educational advocacy, respite care and in-home support.

(603) 448-2077

Southern New Hampshire Services (SNHS)

(Hillsborough and Rockingham Counties)

Crisis Assistance with Food, Fuel, Housing and Utilities; Head Start Home Weatherization; Workforce Development

(603) 668-8010

Southwestern Community Services (SCS)

(Cheshire and Sullivan Counties)

Crisis Assistance with Food, Fuel, Housing and Utilities; Head Start Home Weatherization; Workforce Development

(603) 352-7512

TLC Family Resource Center

Teaching loving connections (Previously known as Good Beginnings of Sullivan County) provides important tools and education for parents in Lower Grafton and Sullivan Counties to increase positive relationships with their children.

(603) 542-1848

Vermont

Southeastern Vermont Community Action (SEVCA)

(Windsor and Windham Counties)

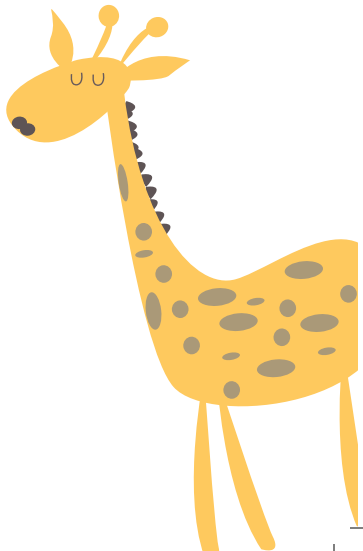
Crisis Assistance with Clothing, Food, Fuel, Housing and Utilities; Home Weatherization; Head Start; Resource Library; Workforce Development

(802) 772-4575

The Orange County Parent-Child Center

Offers parent education and support, play groups, home visits, child advocacy, and a lending library.

(802) 685-2264



Living Assistance Services

Car Seats

Community Partners Behavioral Health and Developmental Services of Strafford County

Provides early support, resources, and services for families of children with developmental disabilities.
(603) 516-9300

Injury Prevention

(Special circumstances only)
(603) 308-2253

Vermont Department of Health

(888) 253-8799

Well Sense Member Services

(877) 957-1300

Women's Health Resource Center (WHRC)

The WHRC holds a Car Seat Recycling and Safety Event each spring. Please call for information.
(603) 650-2600

Child Care

Child Care Aware of New Hampshire

New Hampshire's Trusted Child Care Resource
(603) 578-1386

Dartmouth College Child Care Center

(603) 646-6610

Head Start

(Claremont, NH)
(603) 542-2721
(WRJ, VT)
(802) 295-1122

The Family Place

(Norwich, VT)
(802) 649-3268

Clothing

Baby Steps

(Claremont, NH)
(603) 372-6134

Good Buy Store (SEVCA)

(White River Junction, VT)
(802) 359-4183

LISTEN Community Service

(WRJ, VT, Lebanon, Canaan)
(603) 448-4553

Enfield United Methodist Vestry

(Enfield, NH)
(603) 632-5030

TLC Family Resource Center Thrift Store

(Claremont, NH)
(603) 542-1848

Diaper Banks

Women's Health Resource Center

(On-the-Mall, Lebanon, NH)
(603) 650-2600

Financial Assistance

NH Department of Health & Human Services

(603) 271-9700

VT Department for Children & Families

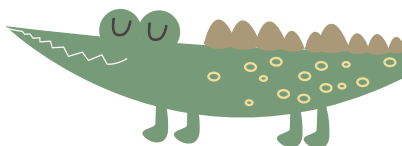
(Family Services Division)
(800) 241-2131
(Benefits/Economic Services)
(800) 479-6151

LISTEN Community Services

(603) 448-4553

Welfare Information

(Please contact your Town Office)



Food

Community Dinners (Free and served family style)

Claremont Soup Kitchen

(Sullivan County)

Every day, 4-5 pm; 51-53 Central Street, Claremont, NH

(603) 543-3290

Enfield, NH

(All welcome)

Wednesdays, 5-6 pm; United Methodist Church, Route 4, Enfield, NH

(603) 632-5026

LISTEN Community Dinner Program

(All welcome)

Monday-Saturday, 5-6 pm; 44 Maple Street, WRJ, VT

Mondays Only, 5-6 pm; Assembly of God, Canaan, NH

(603) 448-4553

Food Pantries

Local food pantries, soup kitchens, food shelves, food banks and other food help can be found at:

www.foodpantries.org

Molly's Place

Has printed lists of Upper Valley Area Food Resources for both New Hampshire and Vermont.

The Women's Health Resource Center

On-the-mall in Lebanon, offers produce. Call for details.

(603) 650-2600

Churches

Churches may offer food assistance as part of their community outreach and ministry program.

Please contact your local church for information.

School Programs

Many schools offer food programs in addition to lunch. Please check with your child's teacher for information.

State Food and Nutrition Resources

Food Stamp/SNAP Program

(New Hampshire)

(603) 271-9700

Food Stamp/3SquaresVT Program

(Vermont)

(800) 479-6151

Women, Infants Children (WIC)

(Eligibility based on income)

offers resources and food to pregnant woman, moms who are breastfeeding or have a new baby, and children from birth to age 5, so families can eat well and grow healthy.

NH: (603) 352-7512; VT: (800) 649-4357



Living Assistance Services

Housing

New Hampshire

Claremont Housing Authority

(Income eligible)

(603) 542-6411

Gile Hill

(Affordable Rentals, Hanover, NH)

(603) 676-7721

Lebanon Housing Authority

(Income eligible)

(603) 298-5753

LISTEN Housing Helpers

(Crisis Housing)

(603) 448-4553

New Hampshire Assisted Housing Division

(800) 439-7247

New Hampshire Housing

(Rental Assistance)

(603) 472-8623; www.nhhfa.org

Southwestern Community Services

(Cheshire & Sullivan Counties)

(603) 542-9528

Sullivan County Housing Coalition

(Homeless Shelter, Emergency and Transitional Housing)

(603) 542-2448

Tri-County Community Action Program (CAP)

(Homeless Intervention Services)

(603) 443-6150

Twin Pines Housing Trust

(Enfield, Hanover & Lebanon, NH; Hartford & WRJ, VT)

(802) 291-7000

Vermont

LISTEN Housing Helpers

(Crisis Housing)

(603) 448-4553

Twin Pines Housing Trust

(Enfield, Hanover & Lebanon, NH; Hartford & WRJ, VT)

(802) 291-7000

Vermont State Housing Authority

(Income eligible)

(802) 828-3295

Fuel Assistance (For Home)

Crisis Fuel & Utility Assistance

SCS: **(603) 352-7512**

SEVCA: **(802) 722-4575**

SNHS: **(603) 668-8010**

LISTEN Heating Helpers Program

(603) 448-4553

Tri-County CAP

(603) 968-3560

Mobile Phone

(Free Phone for income-eligible consumers)

Medicaid recipients can receive a FREE cell phone or land line from a government supported Lifeline Assistance program.

www.lifelinelanding.com

Shelters

Families in Transition

(Manchester, NH)

(603) 641-9441

Friends Emergency Housing

(Concord, NH)

(603) 228-1462

Nashua Soup Kitchen & Shelter

(603) 889-7770

New Hampshire HelpLine

(800) 852-3388



Transportation

New Hampshire

Advance Transit

Free Upper Valley Rides (map of routes in Molly's Place)

(802) 295-1824

Dial-a-Ride The Current

For Medicaid enrolled families.

(888) 869-6287

NH Medicaid Ride Coordinator

(800) 852-3345 x3770

Tri-County CAP Transit

Serves Coos, Carroll and Northern Grafton Counties.

(603) 752-1741

Vermont

Advance Transit

Free Upper Valley Rides (map of routes in Molly's Place)

(802) 295-1824

RCT - Rural Community Transportation

Serves Northern Vermont communities.

(855) 811-6360

Stagecoach Transportation System

Serves Orange and Northern Windsor Counties.

(802) 728-3773

Vermont Public Transportation Association (VPTA)

For Medicaid enrolled families.

(833) 387-7200

